

Product Dimensions and Specs

Overall 22.25W 21.50D 30.50H

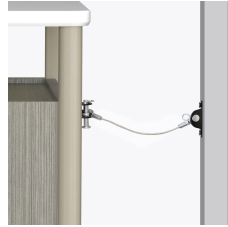
Wt. 94 lbs

Product Features



Durable Finish

Kwalu's proprietary finish doesn't have any of the drawbacks of wood. The finish is moisture impervious, easy to clean, and maintenance-free.



Anti-Tip Kit

An Anti-Tip security kit is included and is recommended by the manufacturer for added safety.



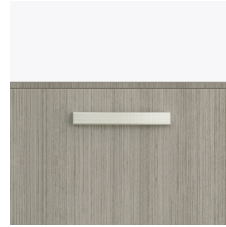
Corian®/ Hanex®/ Krion® top

Corian®/Hanex®/Krion® tops, with the Reverse Quarter Bevel, are available on all bedsides in the collection.



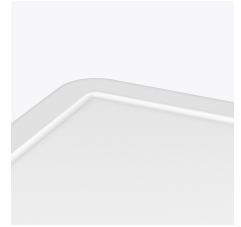
Drawers

All constructed with both dowel and mechanical fasteners for additional strength. Ball bearing removable slides are fully extendable.



Hardware

Choose from 3 hardware styles exclusive to the Ethan Collection.



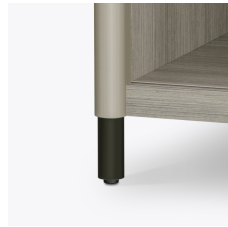
Optional Solid Surface Spill-Proof Edge

The spill resistant, slightly raised edge of this solid surface top keeps minor spills in place on the top.



Optional Kwalu Top

Available with a top made of Kwalu's proprietary material. Spill proof capability not available with Kwalu Tops.

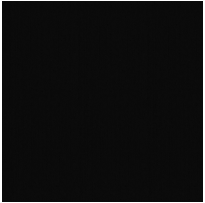


Optional Metal Leg

The Kwalu material leg is standard on the Ethan Collection; a metal leg, in black or silver, is available and is optional.

Product Finishes

Legs and Columns



Premium Black
(Classic)



Premium Pure
Copper (Classic)



Premium Soft
Gold (Classic)



Premium
Platinum (Classic)

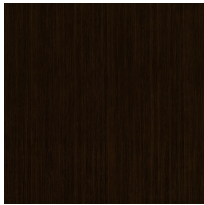


Blackwood
(Classic)

Front, Back and Sides



Wood Ash
(Fusion)



Midnight Oak
(Fusion)



Espresso
(Fusion)



Natural
Mahogany
(Fusion)



African
Mahogany
(Fusion)