

## Kwalu Features

### Kwalu Fusion

- Kwalu's proprietary polymer material
- Non-coated
- Routed edge seam

### Moisture Impervious

- Our Kwalu material is smooth, non-porous, and liquid impervious

### Proprietary Maintenance-Free Finish

- Chemical, impact, ink, and scratch resistant
- 100% free of short-lived catalytic lacquers, polyurethane varnishes and delicate wood veneers
- Look of wood's enduring beauty, without undertaking its costly setbacks

### Easy to Clean

- Withstands rigorous cleaning regime
- 100% bleach cleanable
- Provide long term cleanability
- Survives All EPA's Cleaning-Disinfectant Agents
- Survives Clorox's Healthcare Portfolio of Cleaning-Disinfectant Products

### 24/7 10-Year Performance Warranty on Kwalu-made Panels

- Kwalu's warranty is to term, not pro-rated
- Guaranteeing both the furniture construction and Kwalu finish
- For full details of warranty offered, including any bought-out items, please refer to the Terms and Conditions of Sale <https://www.kwalu.com/sales-terms-conditions/>

### Eco-friendly

- LEED credits available for "Material + Resources" and "Indoor Environmental Air Quality"
- Made in North America
- CARB Compliant

## Camelot Collection Features

## Tops

- Edge Type: Waterfall profile
- Edge Banding Thickness: 3/8"
- Top Overhang: - Sides: 1/2" - Front: 1/2" - Back: 1/16"
- Optional 1" thick solid surface top

## Doors

- Door Style: Inset
- Door Hinge: 165° self-closing Euro hinge
- Edge Banding thickness: 1/16"

## Drawers

- Drawer Style: Inset
- Drawer Slide: 100lb. nickel plated, side mounted full extension, ball bearing removable slides
- Drawer Box Sides and Back: 1/2" board
- Drawer Bottom: 1/4" board
- Drawer construction: 3- piece construction; dowel and mechanical fasteners
- Drawer Pulls: ADA Compliant pulls available
- Edge Banding Thickness: 1/16"

## Back Construction

- 1/4" Solid board
- 3/4" Back panel for bedside cabinets with casters

## Jointing System

- Dowel and mechanical fasteners

## Venting

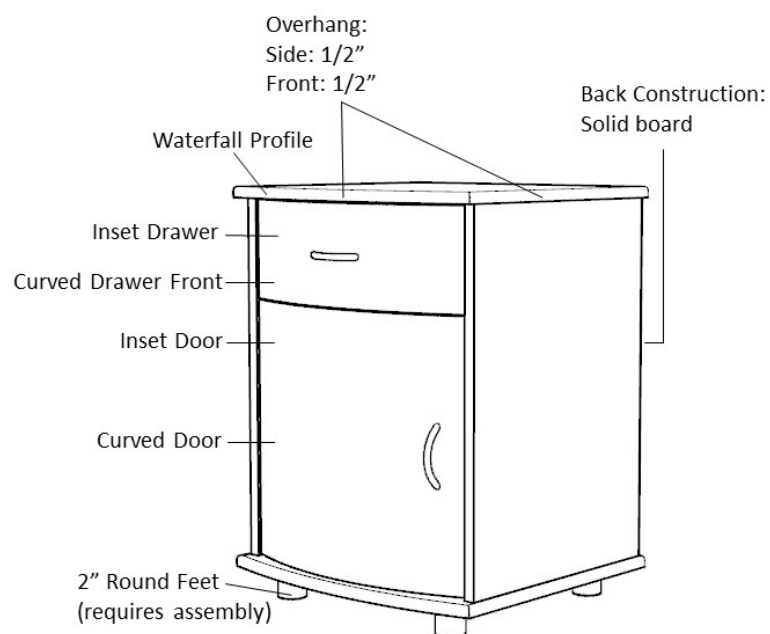
- Venting on back of bedside cabinet with one drawer, one door
- Venting on back of bedside cabinet with three drawers and casters

## Glides

- Standard Option for most products: 2" height feet with nylon knock-in glide

## Casters Available

- 3" twin-wheel locking casters on front, 3" twin-wheel non-locking casters on rear for the following units: - CABS30HCCT - CABS30HCFT - CABS11HCFTL - CABS11HCFTL - CABS11HCCTL - CABS11HCCTR



## Product Dimensions and Specs

Overall 21W 20.5D 30H

Wt. 98 lbs

## Product Statement of Line Images



Camelot Mobile Cabinet, 3  
Drawers, Linen Top  
Model: CABS30HCCT  
21W 20.5D 30H



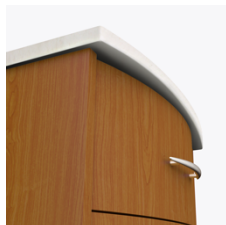
Camelot Mobile Cabinet, 3  
Drawers, Kwalu Fusion Top  
Model: CABS30HCFT  
21W 20.5D 29.75H

## Product Features



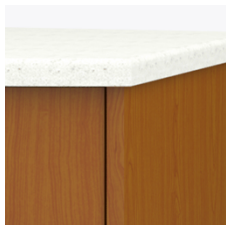
Durable Finish

Kwalu's proprietary finish doesn't have any of the drawbacks of wood. The finish is moisture impervious, easy to clean and maintenance-free.



Curved Front

The graceful curved front is a signature Camelot feature.



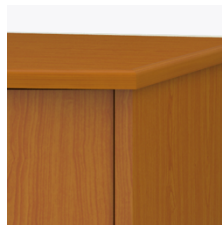
Corian® Top

Available with a 1" thick Corian® top in Linen finish.



Bumper Protection

Bumper protection keeps unit in pristine condition and protects unit from bumps and scuffs.



Optional Kwalu Top

Available with a ¾" top made of Kwalu's proprietary material.

## Product Finishes

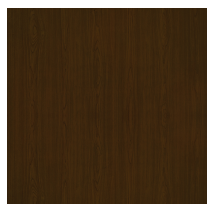
### Casegood Finish



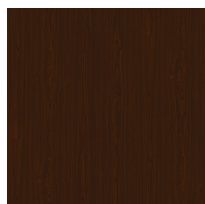
Wood Ash  
(Fusion)



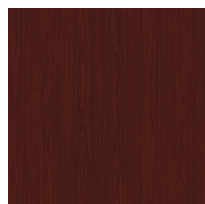
Midnight Oak  
(Fusion)



Espresso  
(Fusion)



Natural  
Mahogany  
(Fusion)



African  
Mahogany  
(Fusion)

## Product Environmental Certifications

